

STATEMENT OF CAPABILITIES



LOGISTICS
PACKAGING
TECHNICAL SERVICES

CORPORATE OFFICE

7031 Crider Road Suite 250
Mars, PA 16046

888.484.4031 (toll-free)

412.506.8250

www.naclpt.com



NAC LPT delivers innovative cost-saving solutions to complex projects. Count on NAC LPT to orchestrate asset-based logistics, packaging, waste management, and technical services to handle your most challenging jobs.



OVERVIEW

NAC LPT offers independent, turnkey waste management solutions. We are unique in that we serve the **hazardous/industrial and radioactive** waste markets. We offer synergies across these markets that few other firms can match. NAC LPT's in-depth knowledge of these industries and the materials they generate—combined with our expertise in logistics and waste packaging systems—enables us to develop the innovative solutions that save our customers time and money.

BACKGROUND

Our waste management and logistics experts have achieved many waste industry firsts that are still in use more than 20 years later. These include the pioneering use of rail and intermodal transportation services, innovative packaging options and transfer facilities for wastes of all types.

- Originators of Class 7 shipments via commercial rail, a method that has now been employed in the U.S. for more than 30 years.
- Implemented and perfected shipping radioactive, hazardous and non-hazardous oils and debris in flexible packaging loaded into gondola railcars.
- Performed more than 10,000 intermodal container shipments from government and commercial sites for processing and disposal.

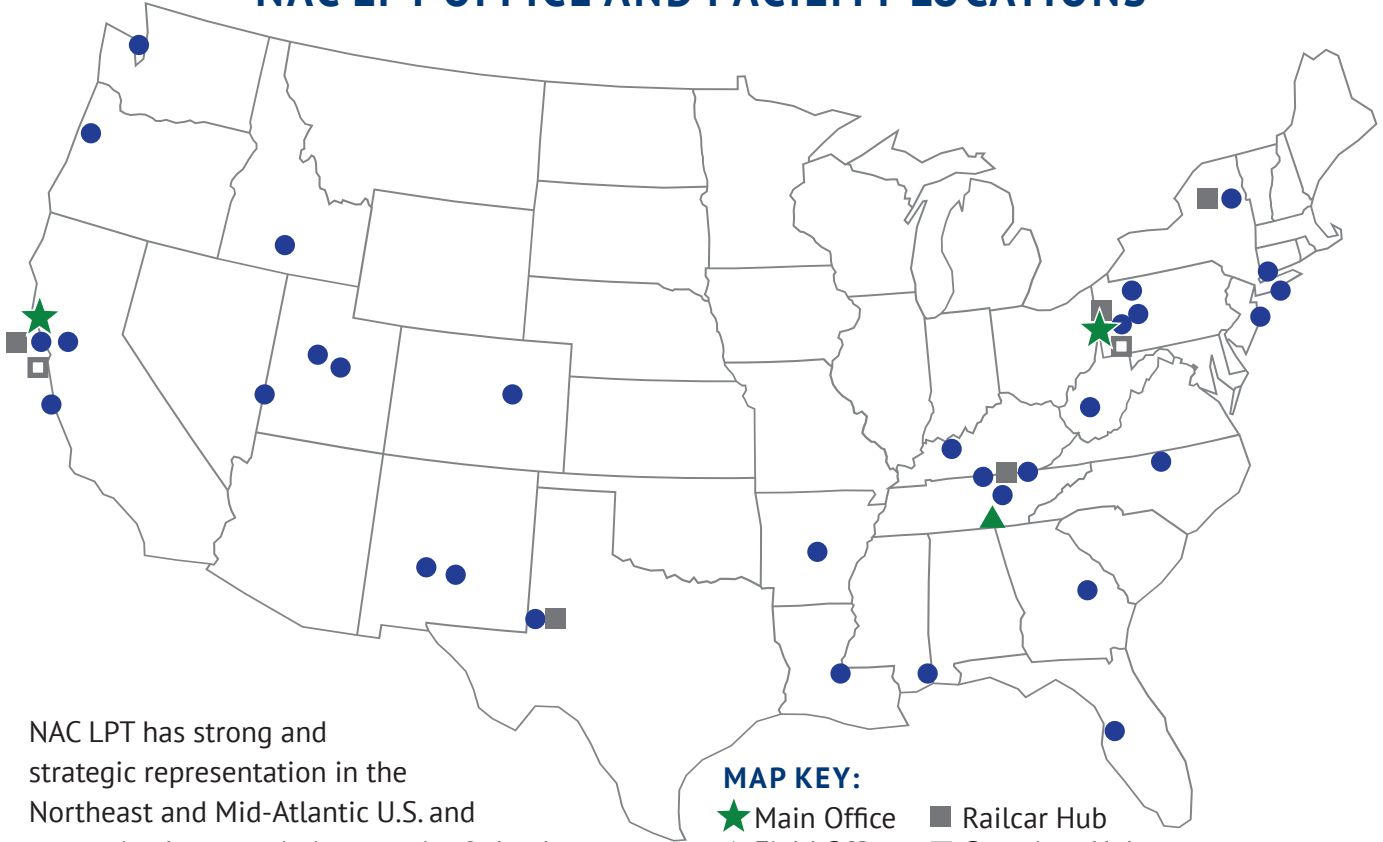
OUR MISSION

NAC LPT's purpose is to provide customers in the hazardous industrial and radioactive / nuclear waste markets with innovative transportation, packaging, waste management, and technical services that enable them to stay on schedule and within budget.

SELECT NAICS CODES

- 562910, Remediation Services (Primary)
- 482111, Line-Haul Railroads
- 541620, Environmental Consulting Services
- 562998, All Other Miscellaneous Waste Management Service

NAC LPT OFFICE AND FACILITY LOCATIONS



NAC LPT has strong and strategic representation in the Northeast and Mid-Atlantic U.S. and we are in close proximity to major federal decommissioning and industrial cleanup sites.

MAP KEY:

- Main Office
- Field Office
- Railcar Hub
- Container Hub
- Project Location

TURNKEY LOGISTICAL SERVICES

TRANSPORTATION



Truck



Rail



Marine

TECHNICAL SERVICES



Certified Shippers



Cost Evaluations



Environmental

- Characterization
- Survey and release
- Radiological field services
- RAM/HAZ qualified shipping

WASTE MANAGEMENT

Partnerships with transload and disposition facilities



PACKAGING

- IP-1/IP-2/Intermodal
- Containers
- Flexible packaging
- Lidded gondolas



MARKETS SERVED



HAZARDOUS/ INDUSTRIAL

- Manufacturers
- Chemical plants
- Site remediation/reclamation



RADIOACTIVE/ NUCLEAR

- Power plants
- Decommissioning
- Construction and engineering firms
- Federal agencies

SERVICE OFFERINGS

TRANSPORTATION/ LOGISTICS

Using our truck and rail logistics expertise and a national network of carriers, NAC LPT manages the transport of all classes of waste and all sizes of cargo anywhere in the U.S.

We are experts in managing rail, truck, marine, and intermodal transportation systems to ship wastes and materials from any point of origin to any destination in the world.

Our logistics experts coordinate transportation via truck, rail or marine. We offer turnkey, portal-to-portal services, including blocking and bracing and rigging and lifting. NAC LPT also will arrange for transloading to take advantage of rail or marine service.

We schedule and manage rail shipments using railroad-owned cars or our own, private fleet. NAC LPT's private cars accommodate higher capacities than railroad-owned cars and includes:

- Flatcars, including an articulation designed to transport 6-8 containers
- Two types of gondola cars, including a specially modified high side car for bulk solids or packaged materials
- Tank cars and box cars

NAC LPT's logistics experts have years of experience working with Class I and short-line railroads. We understand how rail transportation is routed, contracted and scheduled, and we'll negotiate the most advantageous contracts for your rail shipments.



NAC LPT also arranges for over-the-road transportation using roll-off, dump, tank truck, vacuum truck, flatbed, heavy haul, intermodal chassis and other specialty conveyances. We have agreements in place with a national network of trucking contractors, all of whom have been thoroughly vetted by our stringent hazmat carrier auditing program.

PACKAGING

NAC LPT supplies an array of containers and packages that give you a variety of shipping options. We own a growing fleet of new, purpose-built, intermodal containers.

We lease and sell all types and sizes of containers and packages, including metal containers, flexible or soft-sided packaging, Surface Contaminated Object (SCO) wraps and custom products.

Our standing fleet includes:

- IP-1 intermodal containers for bulk materials
- IP-1 20' and 40' LLW shipping cargo containers
- Type A 20' containers with 25.4 cubic yard or 37 cubic yard capacity
- Type A 20' shielded containers

TECHNICAL SERVICES

NAC LPT's experienced project managers and certified shipping experts will execute your project in compliance with your contractual requirements as well as all Federal, state and local regulations.

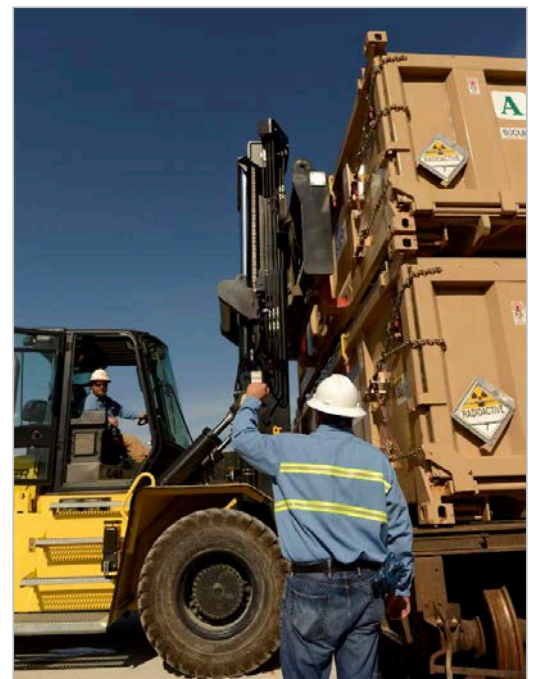
NAC LPT dedicates its project managers to serve as the single-point-of-contact for the life of a project, 24/7/365.

Our technical services personnel perform waste profiling and characterization, permit and package applications, disposal coordination, and on-site supervision.

We also provide trained radiological technicians and can augment your site staff with loading and shipping support.



NAC LPT has the most modern fleet of IP-1 intermodal containers in the industry. NAC LPT offers clients more IP-1 intermodal container options, such as this specialized model for disposal (left photo).



DISPOSITION METHODS SUPPORTED



Disposal



Treatment/Storage



Recycling

WASTE MANAGEMENT

NAC LPT offers our clients ***unbiased waste management***. We have no vested interest in directing our clients' wastes to any disposal facility. This allows us to recommend neutral, impartial solutions.

Our team of waste management experts offers comprehensive services

- Waste packaging expertise
- Waste management plan development
- Disposal cost evaluations
- Waste processing, treatment, storage and disposal coordination
- Waste handling and compliance to WACs
- Waste profiling and characterization

We work transparently with clients to determine the most compliant and cost-effective methods for disposal.

Although NAC LPT has no obligation toward any disposal facility, we do have executed agreements in place with a national network of facilities that accept radioactive and hazardous wastes, including:

- EnergySolutions
- US Ecology
- Waste Control Specialists
- Clean Harbors Environmental Services
- Waste Management
- Heritage Environmental

Our established disposal network enables us to quickly and efficiently identify which facilities can readily accept a waste stream, based on waste acceptance criteria, current and long-range capacities, and other factors.

Our flexibility enables clients to send wastes to appropriately permitted facilities that are closest to their project sites, which can save on transportation costs.

PROJECT EXPERIENCE

REPRESENTATIVE LIST OF PROJECTS

| | | |
|----------------------------------|--|---|
| Accurate / Wastequip | Erial, NJ | Quality assurance consultation |
| AECOM | DOE Separations Research Processing Unit, Niskayuna, NY | On-site technical services to ship 60,000 cy of LLRW |
| Alaron Nuclear Services (Veolia) | Antero Clearwater Facility, Pennsboro, WV | Transportation of 20,000 tons of hazardous and non-hazardous materials |
| Antero Resources Corporation | Various Locations | Master Services Agreement for liquid and solid waste disposal |
| ARS Aleut Remediation | Los Alamos, NM | Oversized component transportation |
| Bettis Atomic Power Laboratory | West Mifflin, PA | Custom loading frames for low-level radioactive waste packaging |
| Buckeye Brine | Coshocton, OH | Transportation, processing and disposal of filters |
| CH2M-BWXT | West Valley, NY | Waste management and characterization |
| Exelon | Nine Mile Point Nuclear Power Plant, Oswego, NY | Specialized 10' IP-1 cargo containers |
| Framatome | DC Cook Nuclear Power Plant, Bridgman, MI | Specialized metal box for use during outage |
| Greenfield Logistics | US DOE Separations Research Processing Unit, Niskayuna, NY | Container lease |
| Hall Drilling | Ellenboro, WV | Impoundment cleanup involving 2,500 tons of tank bottoms |
| Jacobs-CH2M | Schlumberger, Sangamo Weston Site, Pickens, SC | Transportation and disposal of non-hazardous sediment |
| Department of the Navy | Norfolk Naval Shipyard | Long-term lease of 2 ISO cargo containers |
| PacTec | URS/CH2M, Oak Ridge, TN | IP-1 intermodal container sale |
| Sequoia Fuels | Gore, OK | Waste management of process materials |
| US Ecology | US EPA Niagara Falls Blvd. Site | Truck transportation of 13,000 tons of radioactive slag material |
| Waste Control Specialists | US DOE Fermi National Accelerator Lab, Batavia, IL | IP-1 intermodal container lease |
| Waste Control Specialists | West Valley, NY | Truck and rail transportation, packaging, and transload into gondola rail cars of radiologically contaminated waste |

LEADERSHIP TEAM

KEN GRUMSKI PRESIDENT

Ken has a wide variety of Federal D&D waste management expertise in rail/truck logistics, radioactive waste disposal, container design, container manufacturing, radioactive waste processing, hazardous waste management, and transportation of hazardous materials. He has been involved in developing/approving waste management plans for field programs associated with sediment, soil, surface water, building decommissioning, and groundwater investigations; and has analyzed remedial alternatives for applicability, effectiveness, risk, implementation, cost, and scheduling, all to identify “best” transportation and disposal options for site remediation.

CLIFFORD J. BRIGHT DIRECTOR, FINANCE & ADMINISTRATION

Cliff oversees NAC LPT’s financial affairs, including managing NAC LPT’s existing lines of credit. Cliff is an experienced financial professional who has served in the capacity of CFO for several waste management firms like NAC LPT during his 30-year career. During Cliff’s eight-year tenure at MHF, the company grew from six to 75 employees and from \$8 million to \$116 million in revenues. Cliff has varied experience in acquisitions, consolidations, establishment and management of internal controls, multi-profit center accounting with detailed financial reporting, cost accounting, taxes, financial statement preparation and analysis, budget planning and administration, payroll and accounting and human resources.

WES STOUT DIRECTOR, TECHNICAL SERVICES

Wes holds a Bachelor of Science and is a veteran of the U.S. Navy Nuclear Power Program. He has 30 plus years of experience as a radiological Health Physicist and Project Manager with experiences in radiological D&D, industrial safety, and waste management. He is the Radiological lead for characterization of waste streams, identification of viable treatment/disposal alternatives and Federal client waste management technical support.

A TEAM OF EXPERIENCED AND QUALIFIED PROFESSIONALS

- Average 28 years of experience in the waste management industry
- Hazmat training for operations and technical personnel
- Prior experience at MHF, Clean Harbors, WCS, CH2M, Westinghouse, Lockheed Martin, Alaron Nuclear Services and more



KENNETH DOCCHIO NUCLEAR SERVICES MANAGER

With more than 30 years’ experience working in support of the Nuclear Industry, Ken’s primary duties included business development, logistics, and project management. Ken maintained and grew his customer base across all business lines including decontamination, waste processing, packaging, transload, and client access to licensed workspace. Ken was the primary point of contact for work related to Nuclear Safety-Related coatings processes. He has been responsible for commercial and federal market awareness, industry trends, and tracking a sustainable corporate market strategy.

KEVIN HORROCKS OPERATIONS MANAGER

Kevin has 18 years experience managing hazardous and non-hazardous shipments via rail, truckload (flatbed and dry van) air, ocean, roll-off and LTL. His rail transportation experience includes 5+ years as a supplier to US class 1 railroads as well as short lines and transit authorities across the county. Kevin has also successfully managed supply/transportation projects ranging from \$10,000 to more than \$10 million, for both commercial and government entities.

MICHAEL K. OTLOWSKI SENIOR WASTE ENGINEERING MANAGER

Mike has over 25 years of experience in health physics, radiological controls, radioactive waste

management, and radioactive/hazardous materials characterization and shipping. Mike's skill set includes project management/technical support for facility projects and small-scale D&D process engineering. His responsibilities have included the supervision of

waste management staff and radioactive materials shipping personnel, material tracking, package and waste classification calculations, waste profiling, characterization, and modeling.

SAFETY

Safety is the single-most important aspect of our operational approach. We integrate safe practices into every position and every task. All NAC LPT personnel understand that they are responsible for health and safety. Every employee has stop-work authority.

All employees of NAC LPT are required to read our General Health and Safety Plan when hired and when the plan is revised.

Likewise, NAC LPT thoroughly vets all carriers we use with our stringent auditing program for approving suppliers. Our program involves performing a desktop audit of carriers every two years, which includes reviews of the following:

- Insurance coverage
- Current FMCSA Motor Carrier Safety rating
- Driver training records
- Emergency response plan
- Vehicle inspection and maintenance procedures

All carriers also are required to read and sign the "NAC LPT Transportation Service Agreement for Highway Carriers" prior to providing services on behalf of NAC LPT.

DOT TRAINING

In addition to all employees being required to read and adhere to NAC LPT's Health & Safety Plan, operations and technical staff receive regular DOT Hazmat training, annually completing DOT HAZWOPER 8-Hour



NAC LPT's safety program is approved by the US DOT FMCSA and the independent contractor compliance platform ISNetworld.

Refresher Courses. Our in-house certified shipper also has Advanced Mixed Waste Shipper Certification Training.

TRANSPORTATION PLAN

NAC LPT maintains a Transportation Plan to define the process necessary to properly prepare materials for transportation in accordance with DOT regulations and to ship in accordance with applicable state regulations and federal regulations and local laws. The plan addresses the preparation and shipment of hazardous materials to ensure compliance with DOT Hazardous Material regulations, 49 CFR, U.S. Nuclear Regulatory Commission (NRC) regulations, and applicable DOE orders.

Controlled policies, instructions and procedures document the requirements of the plan. Qualified transportation, health physics and quality control staff implement the requirements.

QUALITY ASSURANCE/QUALITY CONTROL

NAC LPT's quality assurance program is designed to meet the applicable requirements of:

- The basic requirements of Quality Assurance Requirements for Nuclear Facility Application ASMENQA-1-2008 (with addenda through NQA-1a- 2009)
- Department of Transportation requirements in Title 49 of the Code of Federal Regulations
- Transportation related quality assurance requirements for Federally regulated work

Our quality management system ensures:

- A project-specific Quality Assurance Plan is developed as applicable for each project or contracted scope of work
- NAC LPT evaluates the acceptability of transportation service and equipment suppliers and maintains documentation of compliance with NAC LPT contract requirements
- NAC-owned and leased equipment is suitably designed and maintained for its intended use

TRAINING RECORDS

NAC LPT management and operations personnel are professionals whose experiences and backgrounds cover a broad spectrum of quality assurance, waste management, remediation, transportation, and disposal services. A record of training is maintained in a file for each employee.

LEAD AUDITORS AND INSPECTORS

NAC LPT's QA Lead Auditors are certified in accordance with NQA-1 criteria. Inspectors are qualified by NAC LPT or by NAC LPT-approved suppliers. Qualification records are maintained in employee training files.

NON-CONFORMANCE AND CORRECTIVE ACTION

NAC LPT implements corrective action for non-conformances and incidents with an occurrence reporting process. This process promotes the prompt identification of conditions adverse to quality, determination of their cause, and resolution of the specific conditions adverse to quality.

The NAC LPT QAP requirements apply across the spectrum of our business activities:



Transportation of materials and commercial products



Equipment including containers and rail equipment



Facilities and field activities staffed by NAC LPT personnel

NAC LPT Quality Assurance Assessment

Project Description: (Attach supporting documentation as needed)

Form Completed by: _____ Review with Compliance: _____ Date: _____

| PROJECT ACTIVITY | REQUIRED IN SCOPE? | | QL | | | ACTIONS REQUIRED/COMMENTS |
|-----------------------|--------------------|----|----|---|---|---------------------------|
| | YES | NO | 1 | 2 | 3 | |
| CARRIER | | | | | | |
| Standard Freight Only | | | | | | |
| Heavy Haul | | | | | | |
| Hazardous | | | | | | |
| Radioactive | | | | | | |
| PACKAGING | | | | | | |
| None required | | | | | | |
| Commercial Grade | | | | | | |
| UN Certification | | | | | | |
| DOT Rating | | | | | | |
| C of C | | | | | | |
| Inspection | | | | | | |
| Testing | | | | | | |
| Survey | | | | | | |
| SERVICES | | | | | | |
| Design Qualification | | | | | | |
| Shipper Qualification | | | | | | |
| Personnel training | | | | | | |

NAC LPT Quality Assurance Assessment

GRADED APPROACH

Upon award of a project, NAC LPT's Operations Manager and Quality Assurance Director complete a Quality Assurance Assessment to identify the key quality elements of the scope of work. The QA Director uses the Quality Assurance Assessment to develop a tailored quality plan.

Our quality plans use a graded approach that rates each project element according to risk or complexity:

1

QUALITY LEVEL 1

- Applicable to nuclear-grade work
- Assigned when the work scope item or function has customer-invoked QA criteria or complexity contributing to a high-performance risk, a high safety risk, or significant consequences of failure
- Typically requires NAC LPT independent verification or detailed review of qualifications, certifications, inspection, or testing
- Includes NAC LPT-generated documents that include calculations, or that certify shipments, materials, or activities

2

QUALITY LEVEL 2

- Applicable to work with chemically hazardous materials
- Assigned when work scope items or functions have complexity contributing to a moderate risk, a moderate safety risk, or moderate consequences of failure
- Typically requires NAC LPT receipt and acceptance of qualification, certifications, or testing
- Includes NAC LPT-generated documents that are procedural in nature, or NAC LPT review and use of customer-generated documents and certifications (such as shipping manifests and waste profiles)

3

QUALITY LEVEL 3

- Assigned to work scope items or functions evaluated to be commercial-grade or low-risk, low safety risk, or low consequence of failure
- Typically requires no unique qualifications, certifications, or testing

MEMBERSHIPS & AFFILIATIONS

